

Networks NZ

Capability Statement

Downer today

We are a leading provider of integrated services across Australia and New Zealand, delivering and maintaining essential infrastructure that enables communities to thrive.

26,000 employees 

\$10.6 billion revenue in 2025

500+ locations 

A network of 21,000 suppliers and subcontractor partners 



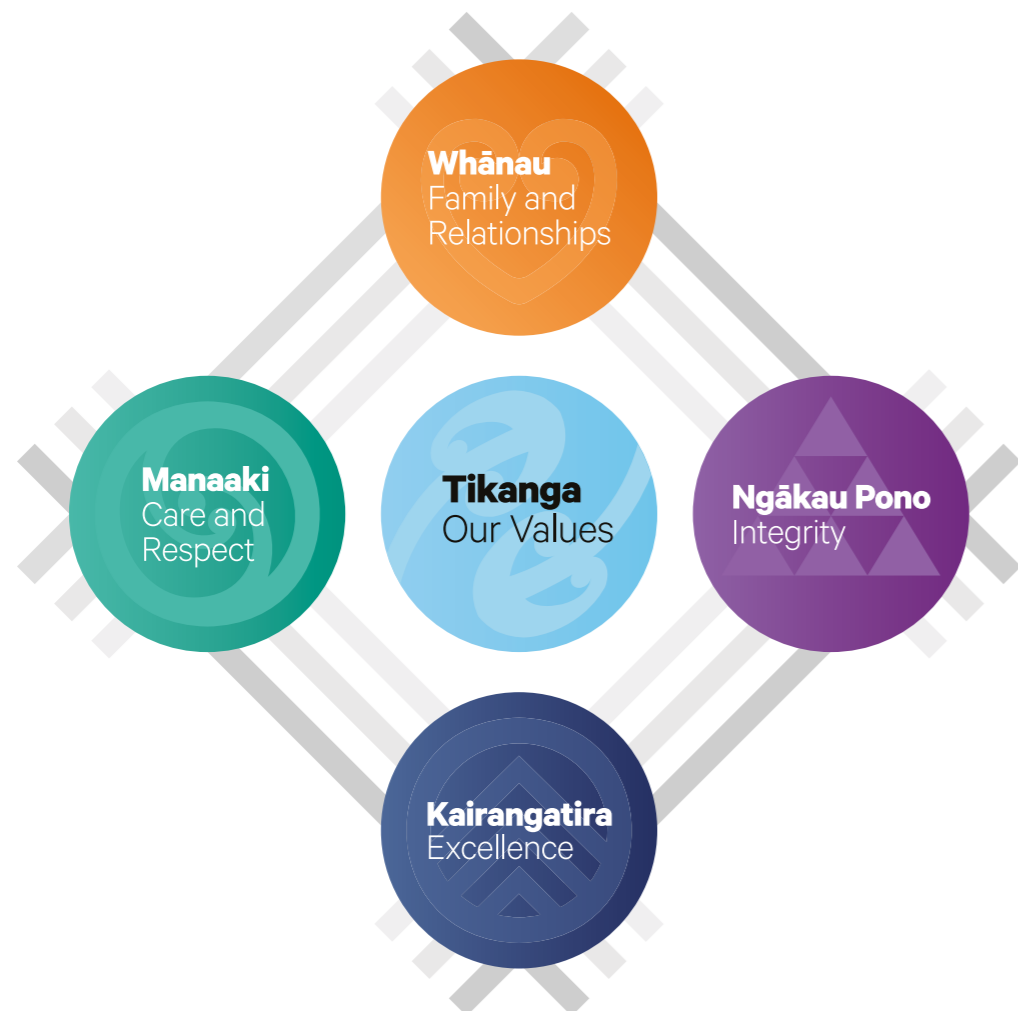
Our Tikanga

Our Tikanga (values) are an intrinsic part of how we do business at Downer and the behaviours we aspire to live by. In the Maori context, the word Tika means correct, so Tikanga means doing things right. Our values centre around Whānau (Family and Relationships), Manaaki (Care and Respect), Kairangatira (Excellence) and Ngākau Pono (Integrity).

"Tultula ngātahi mātou ki te mana o te Whānau, te Manaaki te Kairangatira me te Ngākau Pono. Tultula hei korowai tikanga tuku iho mō tātou." Our cloak of values stitches us together as one.

Integrating our Tikanga into our operations through Ngā Pou e whā o Downer - the Downer Four Pillars

Alongside our Tikanga is Nga Pou e Whā o Downer-Our Downer Four Pillars, underpinning our mahi in safety & sustainability, delivery, relationships and thought leadership. Our Pou (pillars) are based on the Maori tradition that people and forests are deeply connected.



Our Purpose:

Enabling communities to thrive.

Our Promise:

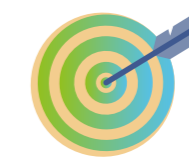
Our customers' success is our success.

Our Pillars:



Safety & Sustainability

Safety is our first priority. Zero Harm to our people, communities and environment is embedded in our culture. We will leave a positive legacy for future generations.



Delivery

We build trust by delivering on our promises with excellence while focussing on sustainability, value for money and efficiency.



Relationships

We collaborate to build and sustain enduring relationships with our customers, our people and communities based on trust and integrity.



Thought Leadership

We remain at the forefront of our industry by employing the best people and having the courage to challenge the status quo.



Networks NZ

Decades of experience. Size and scale to deliver for our customers.

We are proud to work with New Zealand's largest energy providers to deliver transmission, and power and gas distribution services for their customers.

We design and deliver new network assets, construct and maintain electricity and gas networks, and provide a range of asset inspection and monitoring services. We are passionate about building renewable energy infrastructure in Aotearoa, with a portfolio that includes wind farms and geothermal plants, as well as solar farms in Australia.

Solutions

- Transmission
- Power & Gas Distribution
- Renewable Generation
- Major projects
- Minor capital works
- In-house Engineering & Design
- Underground service locating
- 24/7 emergency & fault response
- Industry expertise
- Drone capability
- Design, build, maintain & operate
- Asset inspection & monitoring

Built NZ's largest wind farm:
220 MW powering
55,000 homes.

Team of
450+
 industry experts

Delivering energy services to more than
500,000
 people
 across NZ

Maintaining
64,000km
 of client's distribution networks

Responsible for maintaining and operating
4,500km high
 voltage transmission lines

Operational coverage across
80+ locations

Get to know the Downer Difference

It's what sets us apart from the rest.

Downer's ability to offer customers a comprehensive, integrated solution across the full spectrum of services they require, makes us unique in the Australian and New Zealand markets.

- **Leading provider of asset maintenance solutions for power, gas and distribution networks in New Zealand.** We balance our significant size and scale with our local presence to deliver.
- **Expertise in the renewable energy sector.** We create positive social and sustainable outcomes for our customers and the community through the generation of renewable energy.
- **Regional delivery capability.** More than just a contractor, we build long-term collaborative relationships with our customers built on trust and transparency.
- **Market leading capability.** Our expertise spans in-house design and engineering capability, technical innovation, and dedicated crews of qualified tradespeople.
- **Proven track record.** Robust risk and governance frameworks ensure consistent and repeatable outcomes for our customers.



Who we are

Our Networks NZ team comprises 450+ experienced and dedicated people working with some of New Zealand's largest asset owners and energy providers.

Collaboration

Our team's capability ranges from the design and delivery of capital works projects to the provision of planned and 24/7 reactive maintenance services.

We collaborate closely within our business units across Energy & Utilities and Transport & Infrastructure to deliver a diverse range of works. Having this level of expertise and capability at our fingertips means we can share ideas, methodologies and technical know-how to ensure industry best practice.



Partner of choice



With technology rapidly evolving to meet modern energy demands and expectations of good sustainable practices, our Networks NZ business continues to grow and diversify. Downer Networks NZ is at the forefront of emerging market trends, aligned with our customers' goals of decarbonisation, distributed generation and

digital transformation. With our strong collaborative approach, we are a partner of choice for end-to-end services in utility assets across our cities, communities and industry.

How we deliver for you

You can count on Downer's track record as a trusted Tier 1 contractor and leader in the field.

Our team collaborates with clients and communities to protect Aotearoa's energy networks. We keep power and gas flowing to our local communities, and work around the clock to resume energy services when a weather crisis hits.

Partnering with cities, rural communities, tangata whenua and industry, our energy experts collaborate to engineer fit-for-purpose and future-proofed solutions.

Capability Overview

<ul style="list-style-type: none"> ✓ Emergency Response Response to weather events 24/7 fault call-outs 	<ul style="list-style-type: none"> ✓ In-house Engineering Multi-disciplinary design Asset management Electrical engineering Protection studies
<ul style="list-style-type: none"> ✓ Transmission Station operating services Minor capital project works Grid investment projects Asset management Quality and compliance inspections Routine, reactive & repair work 	<ul style="list-style-type: none"> ✓ Generation & Industry Design & Build Operations & Maintenance Commissioning Wind, solar & power systems
<ul style="list-style-type: none"> ✓ Underground Service Locators GIS mapping Ground penetrating radar Utility standovers Concrete scanning Hydro excavations 	<ul style="list-style-type: none"> ✓ Distribution Fault management Maintenance & Construction Asset upgrades & builds Streetlighting

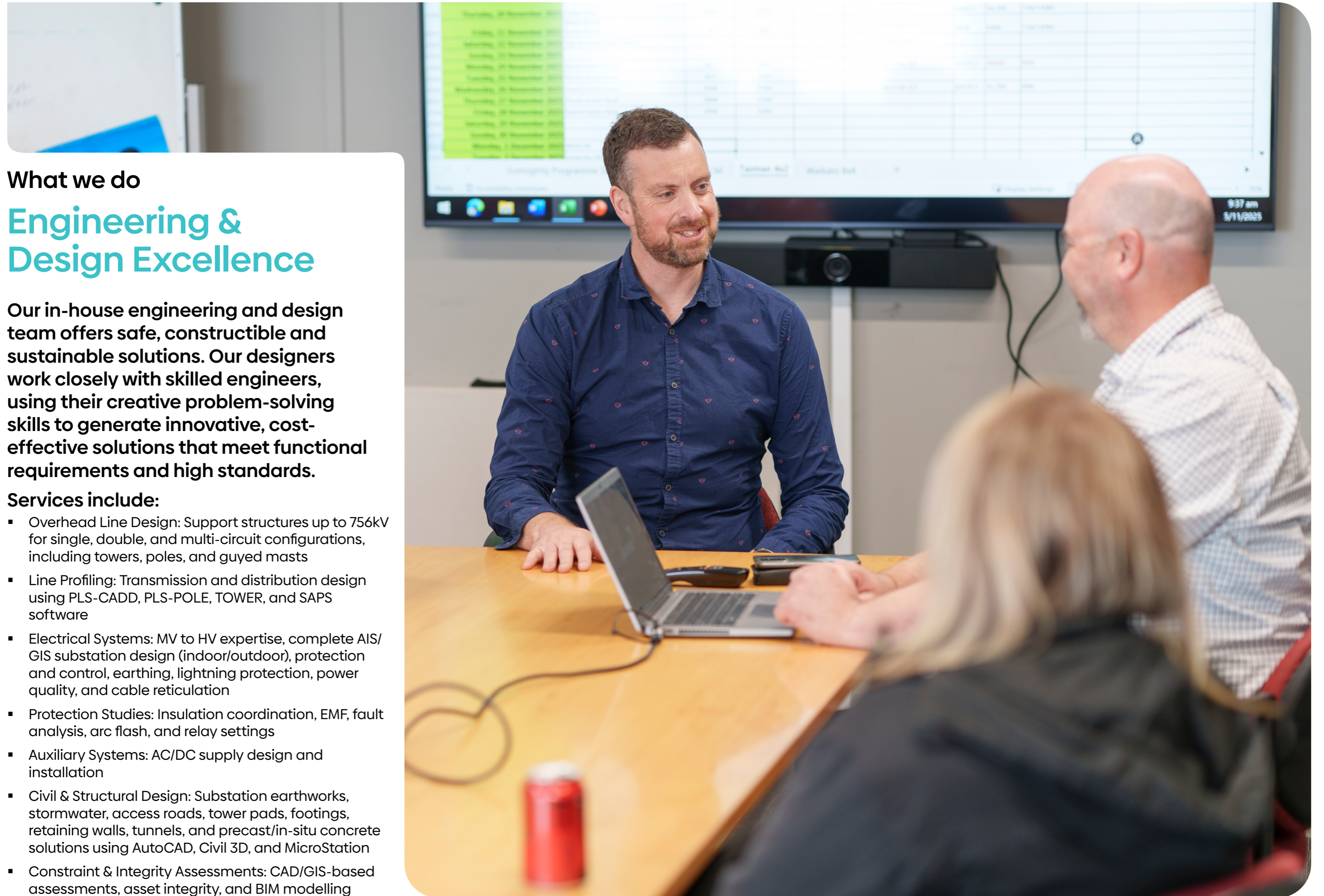
Where we operate

Networks Aotearoa

We offer trusted energy services and integrated solutions from planning, designing, constructing, operating, 24/7 fault response, maintaining, managing and decommissioning generation, transmission and distribution network assets. Our team of 600+ works with some of New Zealand's largest asset owners, with operational coverage in 85 locations from the far North down to Stewart Island.



This map is interactive! Click on each logo to see details of operations and contracts delivered.



What we do

Engineering & Design Excellence

Our in-house engineering and design team offers safe, constructible and sustainable solutions. Our designers work closely with skilled engineers, using their creative problem-solving skills to generate innovative, cost-effective solutions that meet functional requirements and high standards.

Services include:

- **Overhead Line Design:** Support structures up to 756kV for single, double, and multi-circuit configurations, including towers, poles, and guyed masts
- **Line Profiling:** Transmission and distribution design using PLS-CADD, PLS-POLE, TOWER, and SAPS software
- **Electrical Systems:** MV to HV expertise, complete AIS/GIS substation design (indoor/outdoor), protection and control, earthing, lightning protection, power quality, and cable reticulation
- **Protection Studies:** Insulation coordination, EMF, fault analysis, arc flash, and relay settings
- **Auxiliary Systems:** AC/DC supply design and installation
- **Civil & Structural Design:** Substation earthworks, stormwater, access roads, tower pads, footings, retaining walls, tunnels, and precast/in-situ concrete solutions using AutoCAD, Civil 3D, and MicroStation
- **Constraint & Integrity Assessments:** CAD/GIS-based assessments, asset integrity, and BIM modelling

What we do

Renewable Generation

As the world shifts towards a net zero future, Downer Networks NZ is uniquely positioned with its technical capabilities and experience to support renewable energy growth in New Zealand.

We are passionate about renewable energy infrastructure in Aotearoa, with a portfolio that includes wind farms and geothermal power plants, as well as solar farms around Australasia. We have been providing construction services for renewable energy projects in New Zealand since 1933, making us one of the most experienced providers in the renewable energy market and power systems sectors.

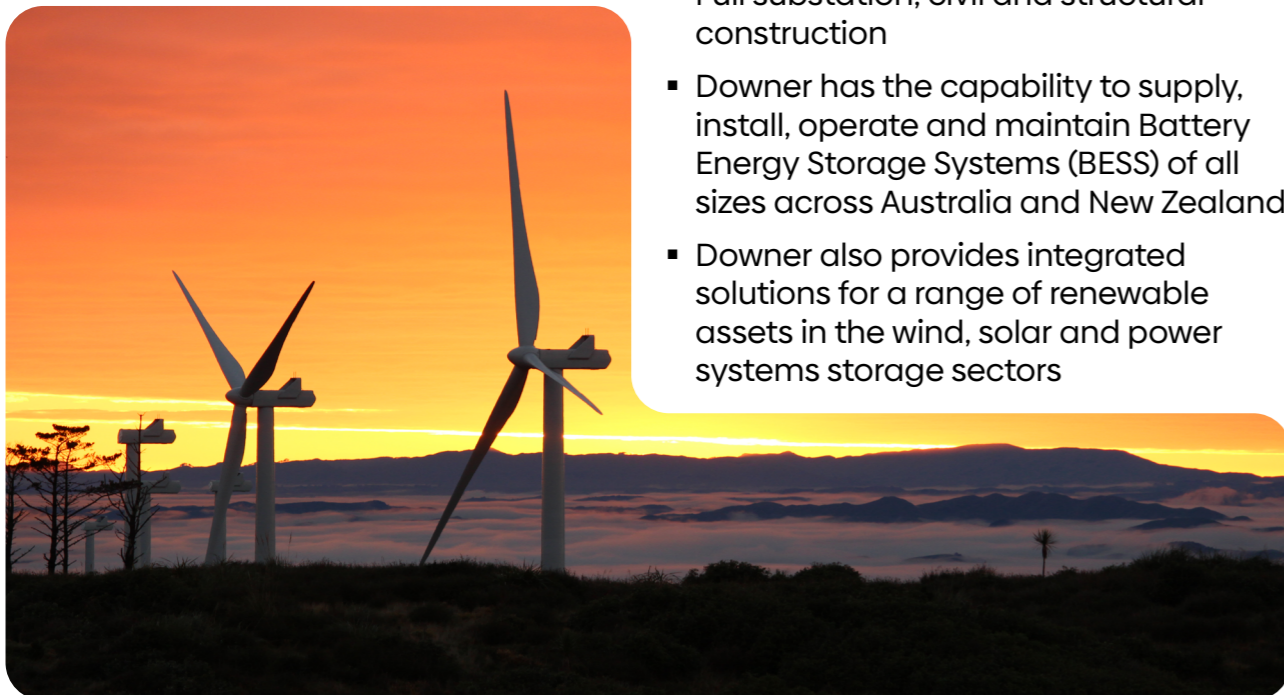
Our team of renewable energy specialists have been delivering sustainable solutions for major clients such as Genesis and Mercury. We also have the added benefit of leveraging expertise from Downer Australia in cross-team collaboration.

We focus on renewable energy assets, including hybrid solutions and associated investments such as battery and other storage, smart metering and future technologies.

Our purpose is to create positive social and sustainable outcomes for our customers and provide renewable energy that enables our communities to thrive.

Our services include:

- Electrical design & build – full Balance of Plant services
- Maintenance, commissioning, and operation of renewable assets, specifically in the wind, solar and power systems storage sectors, including transmission and substations
- Access roads and hardstands
- Wind turbine foundations, transport & erections and collector systems
- Full substation, civil and structural construction
- Downer has the capability to supply, install, operate and maintain Battery Energy Storage Systems (BESS) of all sizes across Australia and New Zealand
- Downer also provides integrated solutions for a range of renewable assets in the wind, solar and power systems storage sectors



Case Study

Turitea Wind Farm North and South

Client: Vestas/Mercury

Overview

Turitea Wind Farm is the largest wind farm in New Zealand, with 60 turbines along a 14km ridge at Turitea on the northern extremity of the Tararua Range. Vestas engaged Downer to oversee and deliver the civil and electrical works for both the North and South sites. The wind farm generates around 470 GWh per year – enough to supply electricity to 50,000 homes.

Solution

Downer performed a wind farm Balance of Plant (the cost of the infrastructural and facilities) design and installation, including an indoor/outdoor 33/220kV substation, 33kV collector cables, earthing, SCADA, communications testing, and commissioning. Downer also provided an in-house technician to complete the commissioning works. When Downer received the client-supplied step-up transformers, we found

that they were not fit-for-purpose. We worked with the client and manufacturer to develop a cost-effective solution that allowed the transformer to be tested and commissioned.

Outcome

Downer Networks NZ delivered the high-voltage substation and all electrical works. Hawkins constructed the buildings, and our civils team performed the earthworks carving out the bases, foundations and supporting road network. Downer supported all parts of the project besides the blades and towers for the Balance of Plant contract at Turitea.

All the electrical works were completed using only Downer Networks NZ's in-house personnel. Downer provided a streamlined approach to the project by leveraging our expertise across Energy & Utilities and Transport & Infrastructure.



What we do

Transmission & Substations

Downer is a leading provider of integrated infrastructure services across Australia and New Zealand. With a strong legacy in power transmission in Australia, Downer has now expanded its expertise into the New Zealand market, supporting the country's transition to a low-emissions, electrified future.

We are a trusted partner to utility providers, private developers, and government agencies, delivering critical infrastructure that powers communities and supports the transition to decarbonise New Zealand.

Services include:

Substation delivery

- Full lifecycle services including design, procurement, construction, commissioning, and operations
- Routine, reactive and repair work
- Civil works, including access ways, retaining wall construction and road resealing
- Completing live line work to minimise disruption to power supply for customers

Grid maintenance

- Licensed drone operators using drones to conduct infrastructure inspections and monitor assets
- Routine & preventative maintenance of high-voltage transmission assets
- Station operating services
- 24/7 fault call-out response – rapid deployment of teams for emergency fault detection, response, and isolation
- Minor capital project works – delivery of small-scale infrastructure upgrades
- Contestable project delivery – participation in Transpower's contestable work panels, enabling Downer to bid for and deliver major grid investment projects beyond the core contract



Case Study

Tokaanu-Whakamaru Tactical Thermal Upgrade

Lines Maintenance and Construction

Client: Transpower

Overview

Transpower engaged Downer Transmission to complete a Tactical Thermal Upgrade on the Bunnythorpe to Whakamaru A and B Transmission lines, this was completed in the northern section between Tokaanu and Whakamaru.

This work comprised two new tower builds, 16 tower raises, five strain conversions and a number of attachment point and strengthening solutions.

Alongside this work, Downer's Transmission Foundation teams were deployed to strengthen the foundations at multiple sites in preparation for the upcoming duplexing of both these lines.

Solution

Downer worked alongside Transpower and Beca to assist with design by trialling many of the proposed solutions before rolling out the full tactical thermal upgrade.

With local knowledge and reputation being invaluable when working across several different properties, Downer engaged local contractors to assist with site access and earthworks.

Downer split into multiple teams to complete the range of different works required, this involved cranes, large hiabs and other heavy equipment necessary for the tasks.

Outcome

The project was a success with all required scope being delivered safely, on time and within budget. Downer Transmission continue to work alongside Transpower as they move into the duplexing portion of this industry upgrade.



What we do

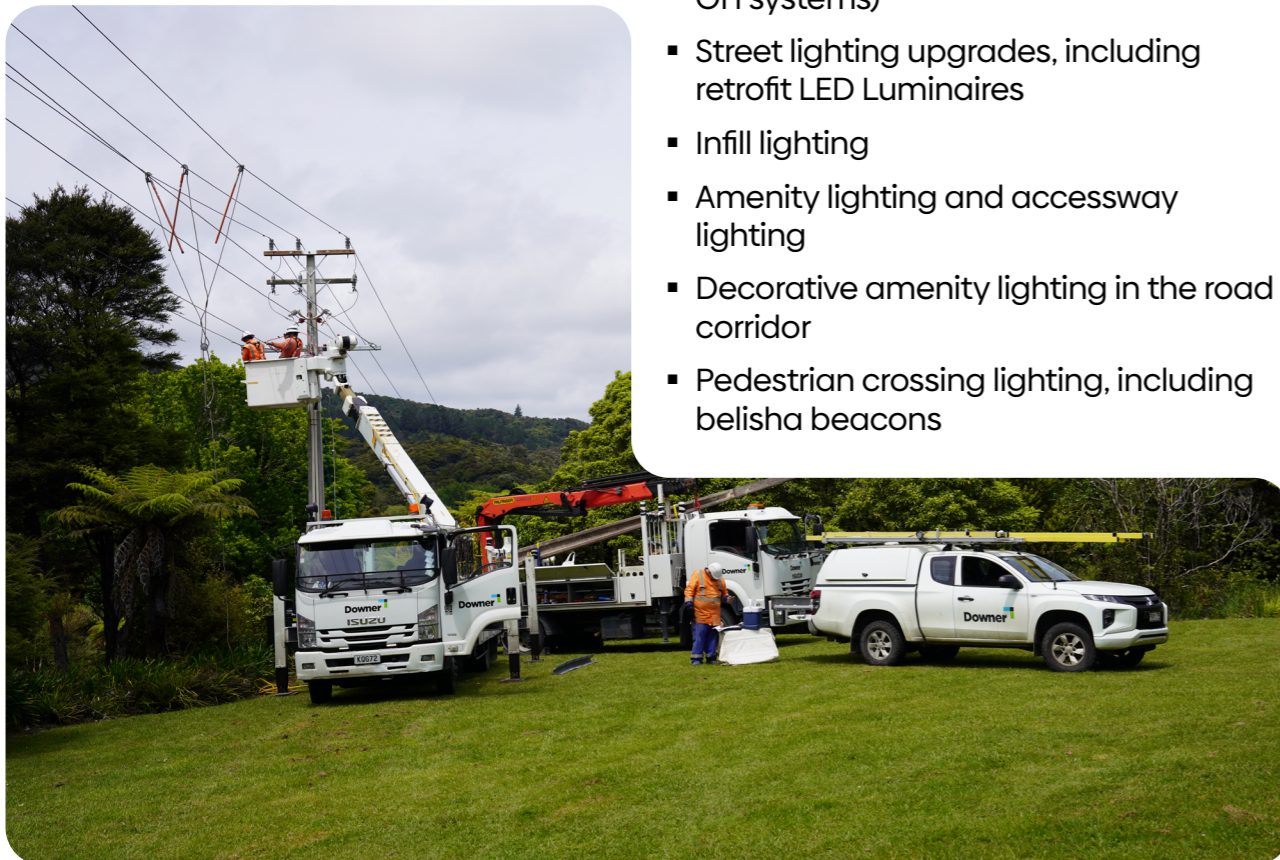
Distribution Power & Gas

Our 200+ strong Distribution team are experts in designing and building electricity distribution lines and substations.

We maintain electricity and gas networks and connect thousands of new customers each year. We work with asset owners and energy providers, such as Powerco, Vector, Auckland Transport, WEL Networks and Wellington Electricity, to maintain their critical network infrastructure and assets across New Zealand. We are a leading streetlight installation and maintenance contractor supporting road authorities and municipalities nationwide. We look after over 30,000 streetlights through our contracts with Auckland Transport and Hamilton City Council.

Services include:

- 24/7 fault call-out response - rapid deployment of teams for emergency events and fault detection
- Inspections, service centre dispatching and new connections
- Design and construction of subdivisions
- Capacity upgrades
- Underground or overhead extensions or new builds
- Overhead to underground conversions (OHUG) - new or upgraded overhead and underground distribution systems
- Substation rebuilds and new builds
- Commissioning work
- Switchgear replacement (UG, RMU and OH systems)
- Street lighting upgrades, including retrofit LED Luminaires
- Infill lighting
- Amenity lighting and accessway lighting
- Decorative amenity lighting in the road corridor
- Pedestrian crossing lighting, including belisha beacons



Case Study

Powering Growth: Kohia Zone Substation

Client: WEL Networks

Overview

Rapid development in Northgate, Horotiu, and Pukete has created the opportunity for WEL Networks to enhance its distribution system to support growth in the region. To strengthen the network and support future development, WEL Networks launched the Kohia Zone Substation project – and Downer was proud to lead the electrical delivery.

Challenge

The goal was clear: expand local network capacity and resilience, modernise protection and control systems, and deliver a safe, future-ready substation. This meant installing two 33/11 kV transformers with N-1 redundancy, seven 33 kV circuits, nine 11 kV feeders, and integrating SCADA for real-time monitoring – all while maintaining supply reliability during construction.

Solution

Downer's electrical team managed all high-voltage installation, cabling, and commissioning works, in collaboration with skilled local subcontractors for civil and foundation tasks.

Key activities included:

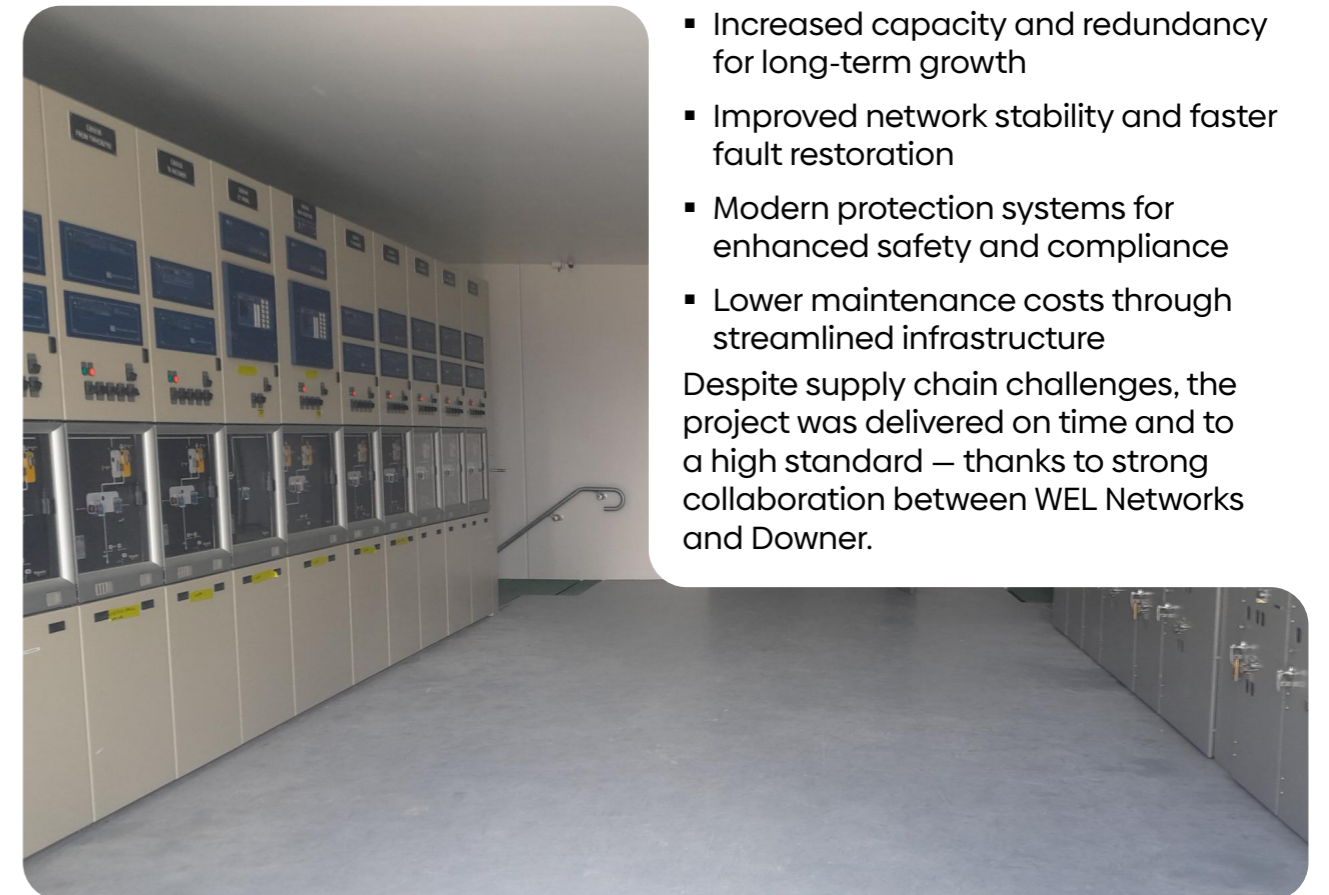
- Installing transformers, switchgear, control panels, and cabling
 - Configuring protection relays and SCADA integration
 - Staged commissioning to keep the network live and minimise disruption
- Safety was front and centre for Downer and WEL Networks, with robust site management and quality assurance embedded throughout.

Outcomes

The Kohia Drive Substation is now live, delivering:

- Increased capacity and redundancy for long-term growth
- Improved network stability and faster fault restoration
- Modern protection systems for enhanced safety and compliance
- Lower maintenance costs through streamlined infrastructure

Despite supply chain challenges, the project was delivered on time and to a high standard – thanks to strong collaboration between WEL Networks and Downer.



What we do

Underground Service Locators

Downer's USL is one of the largest underground utilities locator providers in New Zealand. Our team offers a comprehensive range of utility mapping solutions, including 24/7 emergency utility locations service, EMI, ground-penetrating radar, utility mapping and geographical information systems. USL is BeforeUdig NZ certified and assists network service providers, contractors, councils, and private individuals across Aotearoa. Our highly trained personnel use the latest technology and can detect and map a wide range of underground services.

We are able to accurately trace, identify and map all underground utilities and service routes, including gas, water, telecommunications, electricity and drainage, using various tools and methods such as:

- GIS/GPS Mapping
- Virtual Trial Pits using Ground Penetrating Radar (GPR)
- CAD drawings or GIS output data
- Utility standovers
- Hydro Excavations
- Geophysical Ground Investigations specialising in terrestrial and borehole geophysics
- Underground Camera Inspection (CCTV), condition assessment and sewer lateral locating
- Concrete scanning



Case Study

Tuvalu International Airport Runway Project

Client: Downer Transport and GHD

Overview

As the sea levels are rise around the islands of Tuvalu, the runway has been affected by the under-mining sea currents creating anomalies underneath the Tuvalu International Airport runway surface.

The Underground Service Locators (USL) team was commissioned by Downer Transport, in partnership with GHD, to complete a comprehensive ground penetrating radar (GPR) scan to determine areas under the runway requiring immediate repair.

The urgency of the project was crucial, as a group of islands in Tuvalu, which is home to around 11,000 people, have less than 100 years before rising sea levels will claim all the current landmass.

Solution

The Underground Service Locators team members were given ten days to scan 1.5 kilometres of ground along the runway. By the end of the trip, they had walked back and forth and scanned about 110 kms of ground, which is the longest GPR scan ever completed by Downer. It was a challenging project in terms of access and weather with the team working daily in temperatures upwards of 45 degrees Celsius. Most of the work was conducted early in the morning and later in the evenings.

Outcome

The Tuvalu International Airport Runway project has been an important opportunity for USL to build relationships and showcase its capabilities internationally. The team was proud to be able to provide the results of the scan and data about underground services that will ultimately keep people safe before they undertake construction work on the runway.



What we do

Emergency Response Services

Our Networks NZ team is available 24/7 to keep essential electricity and gas services running for local communities during extreme weather events.

With a deep understanding and sense of ownership over our local networks, our frontline team members respond to widespread power outages and damaged infrastructure, helping communities to manage and recover from the disruption to their everyday lives.

We operate with deep network knowledge and rapidly deploy teams from across the North Island for emergency events and fault detection. Field crews are strategically rotated and supported to prevent fatigue, while strong communication channels with our customers to ensure coordinated, effective responses.

Services include:

- Coordinating emergency planning with stakeholders to strengthen network weak points
- Managing communications to support operations and field team safety
- Conducting asset checks before and after events to assess risks
- Getting power back up and running for customers
- Repairing and recovering damaged electricity, gas, and transmission network infrastructure and assets

Downer's emergency response isn't just reactive – it's resilient, people-focused, and built on trust, experience, and operational excellence.



Case Study

Powering Through the Storm: Inside Networks NZ's Exceptional Storm Recovery Effort

Client: Powerco

Overview

When stormy weather and high winds swept across the North Island late on Wednesday 14 January 2026, few anticipated just how severe the impact would become. By dawn, more than 15,000 Installation Control Points (ICPs) – that's 15,000 customers – were without power in The Valley and Coromandel regions.

Challenge

At first light on Thursday, our Networks NZ team prioritised assessing the scale of the damage and shaping a strategic plan that balanced urgency with safety. Entire parts of the Coromandel were effectively cut off by slips and widespread road closures, isolating communities and complicating every aspect of the response. One of the biggest challenges was a critical H-structure in Kūaotunu (pictured left) compromised by a slip. The Networks NZ team alerted Powerco, who in turn mobilised geotechnical specialists and began urgent design work to reroute the line.



Solution

Administration staff, managers, and operational leaders from across the business jumped in to assess the network damage and rebuild the restoration plan from the ground up. Their work ensured that crews could focus on the right areas in the right order, starting from the 33kV backbone, stepping down through the 11kV network, and coordinating the arrival and deployment of external support.

Local Downer teams from the Waikato and North-West regions stepped in and those not rostered on that week, as well as external contractors WEL Networks and Horizon Services, offering additional support. In total, it was a regional mobilisation.

There were zero safety incidents due to deliberate decision making and fatigue being managed proactively. Some crews were intentionally stood down during the day so they could take on emergency work overnight as the high winds continued to push faults through the network.

The numbers tell the story of just how extraordinary the effort was:

- **Wednesday night:** 15,000 customers without power.
- **Saturday:** reduced to 146 customers, supported by
 - five additional lines teams, and
 - four Valley lines teams – a total of nine teams focused on reconstruction.
- **Sunday:** down to just 30 customers.
- **Monday:** the network fully restored to business-as-usual operations.

Locals supporting locals

In February 2026, our local Stratford team spent a day volunteering at the stunning Rotokare Scenic Reserve— a meaningful opportunity to support conservation efforts while strengthening team connections.

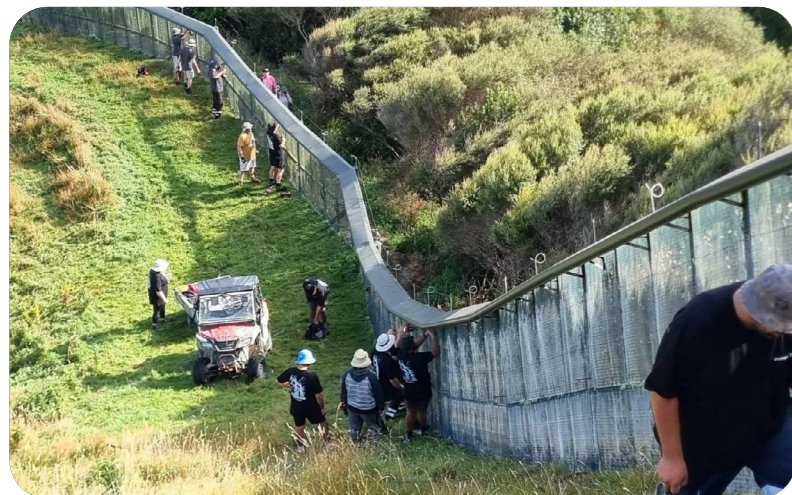
Located in a 230-hectare forested hill country catchment, Rotokare is an ecological treasure. The reserve features extensive wetlands, a 17.8 hectare natural lake, and is proudly predator free, supporting a thriving kiwi breeding programme. It is also home to an array of native birdlife.

The team contributed to a fence remediation project currently underway at Rotokare — essential work that ensures the predator proof boundary remains effective and in top condition. Their task for the day involved replacing the brackets that hold the top hoods on the fence, a job requiring steady focus and teamwork.

By the end of the day, the Stratford crew had successfully replaced 160 brackets, a significant contribution to maintaining the sanctuary's high conservation standards.

Thirteen team members were onsite, doing their bit to make sure the job was done right.

The combination of physical mahi, shared purpose, and the beauty of Rotokare created a rewarding and memorable volunteer experience.





Putting people first.

The safety, health and wellbeing of our workforce is our first priority.

We believe that our work can be performed in a way that is safe for our people, the environment, our business and the communities in which we operate.

Our teams live and breathe this well-established and deeply held belief which is founded on the principle of Zero Harm.

Best practice project management is in our DNA.

Downer's Delivery Management Methodology (DMM) shapes how we operate and deliver value to our customers.

It serves as a guiding framework for effective delivery, establishing governance and leadership standards that ensure consistent and repeatable outcomes for our customers.

Drawing from established project and contract management practices, the DMM is adaptable to business-specific capabilities while aligning with the unique requirements of our customers and legislative standards.



EmpowHER

Downer Women's Network

EmpowHER is Downer's women's network which aims to create a supportive and inclusive environment for women across the organisation.

With local chapters across Australia and New Zealand, the EmpowHER network provides a platform for women employees to connect, voice their thoughts, share experiences and receive guidance, ultimately fostering their professional growth and career.

Led by a governance committee comprising women right across Downer alongside executive sponsorship, the purpose of EmpowHER is to:

- Create a safe and confidential space for women to discuss challenges, seek advice and share experiences, especially in a male-dominated work environment
- Offer opportunities to share career progression and life journeys, fostering a culture of mentorship and guidance
- Facilitate interactions with senior leadership team members, eliminate barriers and address the glass ceiling, providing insight into career progression and life journeys.

"Being part of EmpowHER was one of my most inspiring initiatives and challenges of 2024. It was fantastic to see members and allies coming together at our first round of events. Looking forward to seeing what we will build together as a network this year!"

Maria Gatica, Project Engineer

400+ EmpowHER event attendees during 2024.

Network of 485 members and allies.

Networks NZ is committed to increasing and promoting female leaders within our business, with several team members completing Thrive every year. The Thrive programme supports Downer's strategic focus on strengthening leadership and increasing gender diversity. It aims to develop confident, capable leaders by identifying challenges, building new skills, and fostering both personal and professional growth. Participants gain new knowledge and develop new capabilities that help drive them towards progressing in their careers.



Thrive Women's leadership development program

Downer Social Impact Programmes and Initiatives

LEADERSHIP & DEVELOPMENT

Te Ara Whanake

Providing leadership training for Māori - both internally and externally through our supply chain.



Te Ara Māramatanga

To increase knowledge and understanding of Māori culture and Tikanga, for our non Māori employees. A noho marae 36 hour experience.

Te Whanake Timatanga*

Providing Māori employees within Downer the opportunity to study for an NZQA Level 4 and above qualification.



NEW CAREER PATHWAY PROGRAMMES

Downer Ready & Trades Ready*

Employment and transition support into the infrastructure and construction industries for individuals joining Downer or Downer's supply chain.



YOUTH SPECIFIC DEVELOPMENT

Tētēkura*

This is a unique programme to recruit, support, and develop rangatahi to successfully transition into the workplace, gain qualifications and access career opportunities.



SECOND CHANCE EMPLOYMENT

New Horizons*

Downer has a Memorandum of Understanding with the Department of Corrections nationwide supporting individuals with a previous criminal history and/or currently serving a community-based sentence/released from prison into suitable job opportunities around the country. These participants receive a high level of pastoral care and goal-focused coaching.



Lifestyle Programme

Individuals facing employment barriers because of previous concerns and/or convictions related to Alcohol and Other Drugs are supported into employment opportunities across the country. These participants receive a high level of pastoral care, regular testing, and support from a specialist Mental Health and Addiction clinician.



IN-WORK SUCCESS

In-Work Success

This support transition into the workplace sits across these programmes to increase the potential for success in employment.



Key (primary focus but not limited to)

● Provides support

● For Pasifika

● Provides mentoring

● For ex-offenders

● Provides upskilling opportunities

● For youth

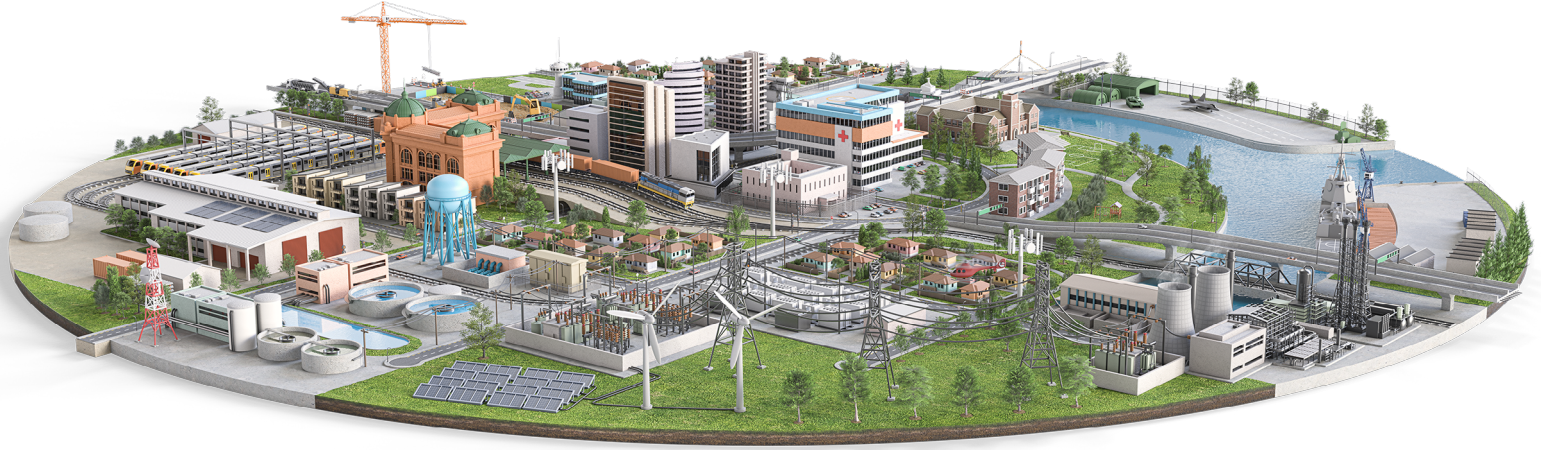
● For women

● For the unemployed

● For Māori

* Supported by the overarching In-Work Success programme

Our programmes are supported through partnerships with Ministry of Social Development and Te Puni Kōkiri.



Energy & Utilities.

Downer New Zealand Networks

58 Taurikura Dr, Tauriko,
Tauranga
North Island 3171
New Zealand

Contact: 07 578 0087

Whakataukī

Whakataukī Ko te whānau, ko te manaaki, ko te kairangatira, ko te ngākau pono ngā tikanga tuku iho hei korowai mo tatou. Ko te Kauri i whakawhiwhi haumarū, ko te Rimu i whakawhiwhi taonga, ko te Tōtara i whakawhiwhi whanaungatanga, ko te Kahikatea i whakawhiwhi whakaaro matakite. Ngā pou e whā i aumangea ai te whakataukī 'Mā te whanaungatanga ka angitū'. Hui e! Taiki e!

We are held together by our closely held values of family and relationships, care and respect, excellence and integrity. The Kauri connects us to Safety, the Rimu connects us to Delivery, the Tōtara connects us to Relationships and the Kahikatea connects us to Thought Leadership. These are our four Pillars upon which we build 'Relationships creating success'. United and ready to move forward!

